



World Stomach Day

Prof. Chun-Ying Wu

**Taipei Veteran General Hospital
National Cancer Institute, Taiwan**

World Stomach Day

- Oct. 2 as the WSD
- Why we need it?
- What to on WSD?
- What is next step plan?

First *H. pylori* reporting

Barry Marshall: Oct. 2, 1982



October 2

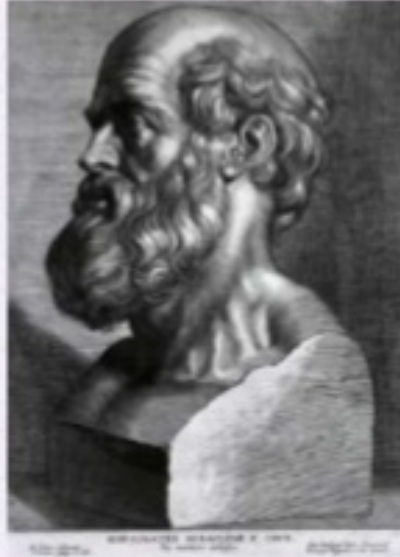
Indian Holiday

Holiday Calender



World Stomach Day

- Oct. 2 as the WSD
- Why we need it?
- What to on WSD?
- What is next step plan?

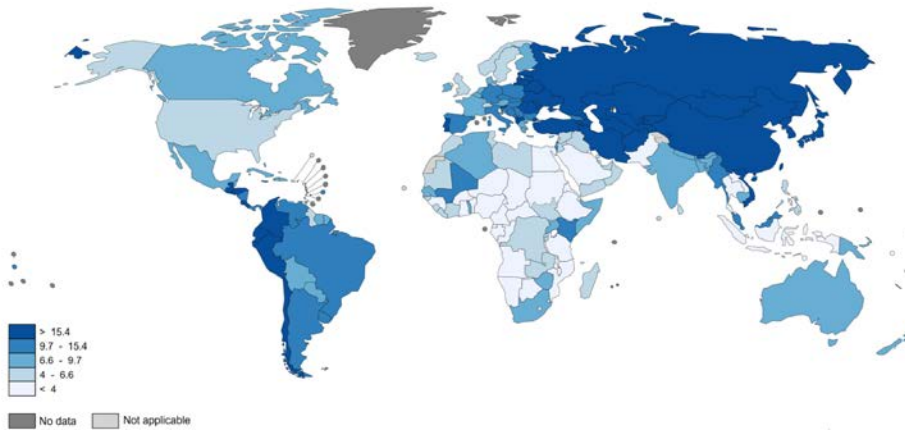


“Death sits in the bowels; a bad digestion is the root of all evil” - Hippocrates, ca. 400 BC

Bad digestion : the root of all evil

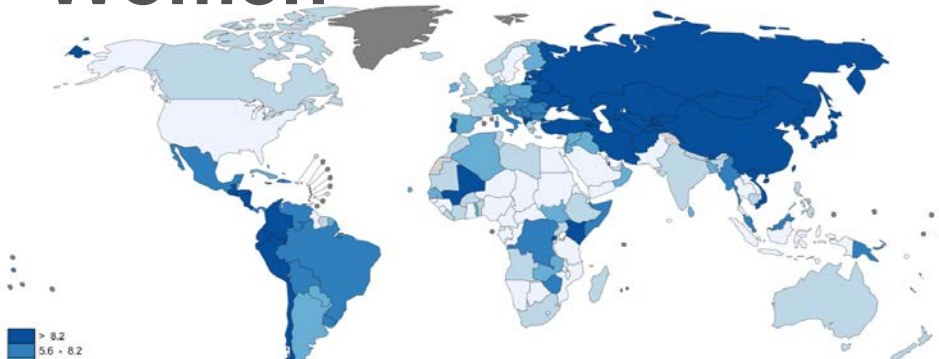
Stomach Cancer Worldwide

Men



Rank	Country	Age-Standardised Rate per 100,000 (World)
1	Korea, Republic of	41.8
2	Mongolia	32.5
3	Japan	29.9
4	Guatemala	23.7
5	China	22.7
6	Tajikistan	21.7
7	Kazakhstan	21.6
8	Kyrgyzstan	21.4
9	Albania	20.1
10	Belarus	18.8
11	Turkmenistan	18.2
12	Costa Rica	17.3
13	Bhutan	17.2
14	Honduras	17
15	Ecuador	16.9
16	FYR Macedonia	16.5
17	El Salvador	16.4
18	Viet Nam	16.3
19	Russian Federation	16
20	Peru	15.8

Women

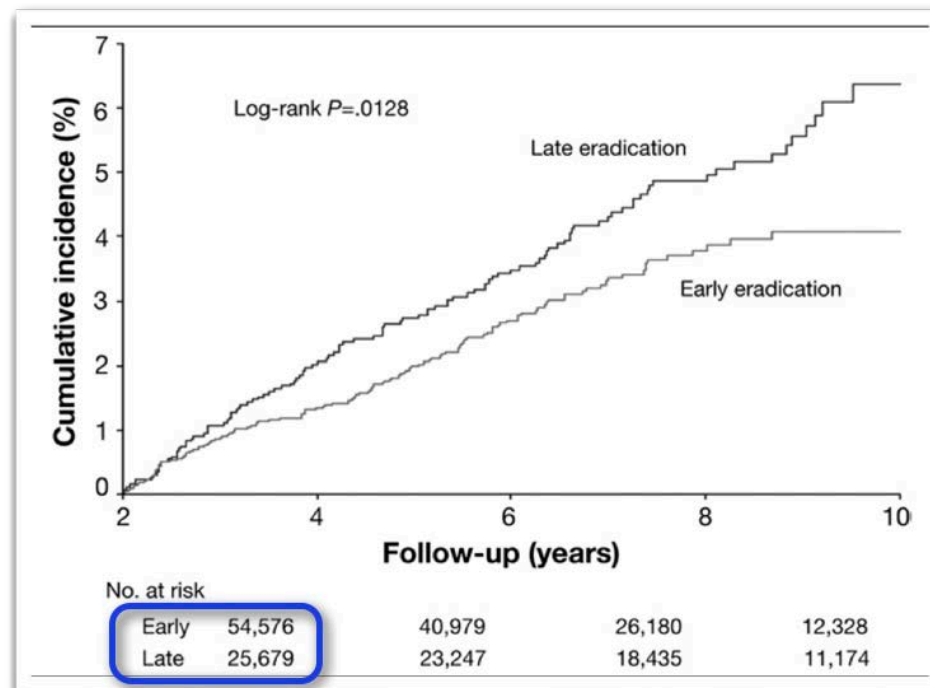


Cancer Incidence: 5th

Cancer Mortality: 4th

Early *Helicobacter pylori* Eradication Decreases Risk of Gastric Cancer in Patients With Peptic Ulcer Disease

CHUN-YING WU,^{*,‡,§} KEN N. KUO,^{||} MING-SHIANG WU,[¶] YI-JU CHEN,^{§,#} CHANG-BI WANG,^{*} and JAW-TOWN LIN^{¶,**}



	Hazard ratios	95% CI	P value
Age			
Each increament year	1.03	1.02–1.04	<.001
Sex			
Male vs female	1.46	1.08–1.95	.012
Peptic ulcer site			
Gastric ulcer vs duodenal ulcer	2.89	2.14–3.89	<.001
Peptic ulcer complications			
Complicated vs noncomplicated	1.35	1.00–1.82	.048
Numbers of endoscopic examinations			
≥2 vs <2	3.52	2.74–4.52	<.001
Aspirin or NSAID use			
Frequent user vs nonfrequent user	0.65	0.45–0.94	.022
<i>H. pylori</i> eradication			
Early vs late eradication	0.77	0.60–0.99	.038

Association Between *Helicobacter pylori* Eradication and Gastric Cancer Incidence: A Systematic Review and Meta-analysis

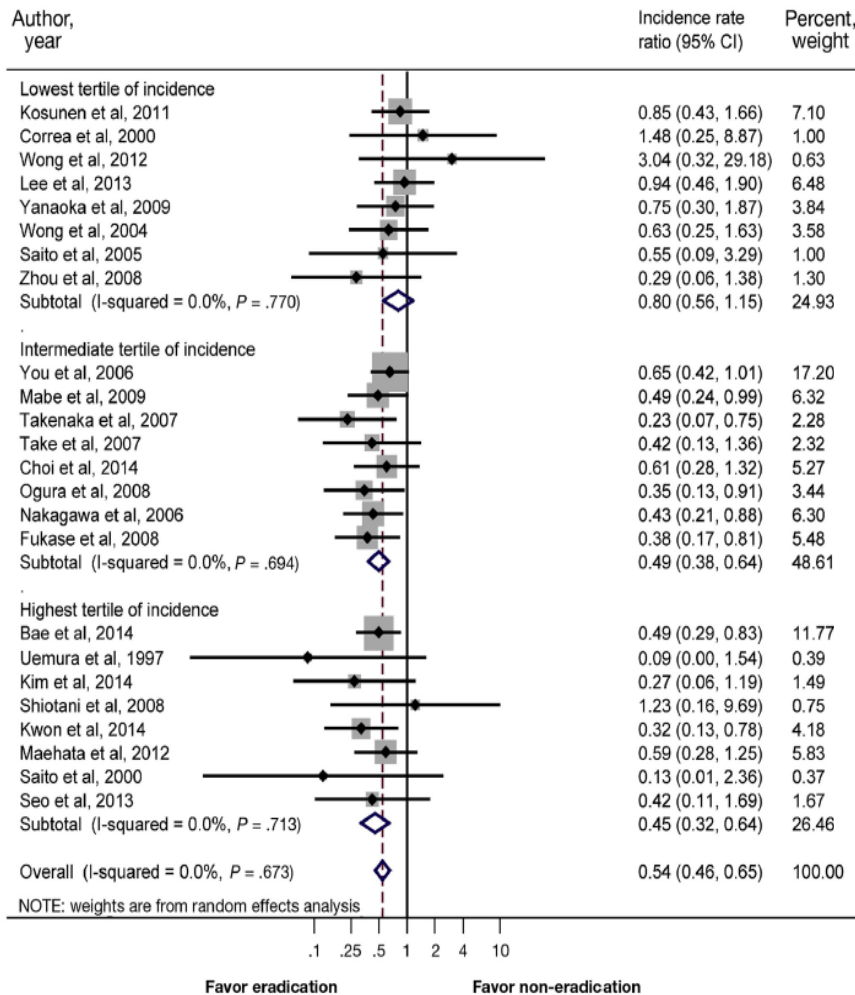
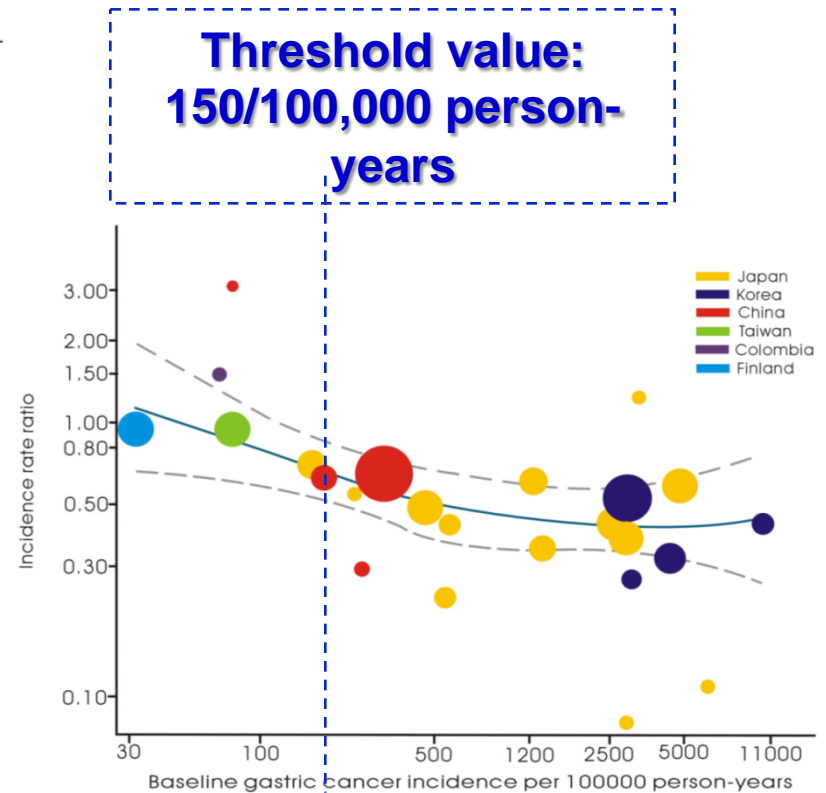


Figure 2. Summary incidence rate ratio of gastric cancer associated with *H. pylori* eradication by traditional random-effects meta-analysis, stratified by baseline incidence of gastric cancer.



Advantages

Patient awareness

Physician involvement

Government support

Industry sponsor

Promote scientific research

World Stomach Day

- Oct. 2 as the WSD
- Why we need it?
- What to do on WSD?
- What is next step plan?

Activities to raise patient awareness



Destination Services Europe



Destination Services Europe

TDDW Sept. 28-30: WSD News and Scientific Conference



Congress | Programme | Abstract Submission | Register | Photo Gallery | Sponsors | Past

2018
Taiwan Digestive Disease Week
Evolution and Revolution of Digestive Diseases
September 28-30
National Taiwan University Hospital International Convention Center, Taipei, TAIWAN

116 DAYS 10 HOURS 41 MINUTES 12 SECONDS

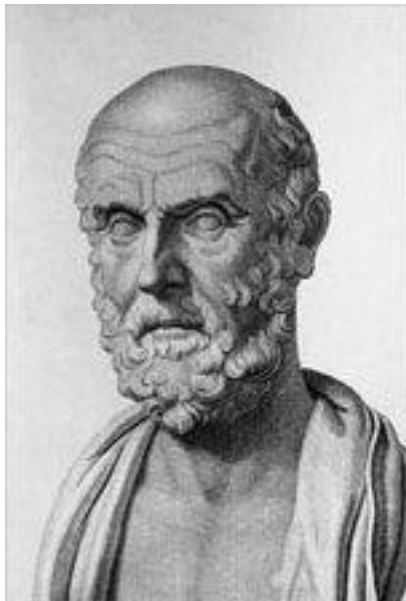
Shezi Island Jogging: Sept. 30



Why Shezi Island ?



- Stomach shape
- In the heart of Taipei, just like the importance of stomach in human health



Why Jogging ?

- Jogging originates from Greece
- Hippocrates: “All diseases begin in the gut”.

World Stomach Day

- Oct. 2 as the WSD
- Why we need it?
- What to do on WSD?
- What is next step plan?

Next steps?



- Organization support: HPMSG, UEG, APDWF, WGO, WEO, WHO, **GI Society in each participating countries**
- **Committee?**
- Websites / media / video
- Scientific/public health research grant

Thank you very much
for your attention !

